




# Who we are...




# ML

Global Services Limited

 7G, GRACE ANJOUS STREET, OFF ADEBAYOR DOHERTY, LEKKI PHASE 1, LAGOS

 +234 811 946 1357

 +234 806 975 0334

 [www.ml-globalservices.com](http://www.ml-globalservices.com)

 @ml-globalservices

 ml-globalservices

 [info@ml-globalservices.com](mailto:info@ml-globalservices.com)

 @ml-globalservices

 @ml-globalservices

*A Leading Provider of Innovative Technology*

## HISTORY AND PHYLOSOPHY

**M**L-Global Services Limited is a wholly indigenous company incorporated on October 5, 2020 with RC: Number 1718297, a company borne of passion for excellence. ML Global Services Limited is a multi-disciplinary company set to deliver a proven track record in oil and gas services, supply chain initiatives, marketing consultancy, product development, maintenance, logistics, procurement services and installation. The company is focused on conceiving, developing and executing substantial projects in these sectors.

ML Global Services Limited utilizes the latest technology to provide our clients with necessary support because we are constantly upgrading our system as technology advances. To deliver quality training to our personnel, we have various consultancies and training specialist centres where we send our staffs for training.

### Objectives

**ML Global Service Limited** is presently expanding its business in order to generate higher goals whilst offering revenue streams by expanding its operation. This has become scalable through the courtesy of a very robust marketing and technical team whom believe that failure is not an option. We consistently increase the volume of home-grown professionals by ensuring technology transfer on all facet of our business is number one in our ethos.

Our goal is simple: client satisfaction through the provision of high-quality work, safe and environmentally friendly services with results delivered on a timely and cost effective basis. The objective of the management of ML Global Services Limited is to provide services in a manner, which conforms to the contractual and regulatory requiremnts, using qualified trained, and experience personnel.

In order to achieve our objectives, it is the policy of ML Global Services Limited to establish and maintained an effective quality system, planned and developed in conjunction with other management function.

The quality system complies with international standards. The assessment of conformity of work to contract and regulatory requirements is made on the basis of objective evidence of quality.

**ML Global Services Limited** personnel are under instruction to implement and work within their area of responsibility, in accordance with the instructions laid down in the company's quality manual.

This manual describes how the quality system of ML Global Services Limited is designed to ensure that all requirments relating to quality are recognised and that a consitent and uniform control of these requirements is adequately maintained to ensure that effective control is established.

This statement documents the personal commitment of the Board of Directors and the Managing Director of ML Global Services Limited to the objectives of this quality system.

## OUR POLICY

**ML Global Service Limited** is determined to take advantage of the evolving culture of the government position on local content inclusion in the upstream energy sector in Nigeria. That is actively encouraging the growth of the indigenous companies. For ML Global Services Limited this will be marked by an increased and improved presence in energy services, marketing consultancy business, maintenance, logistics and procurement services in Nigeria.

### **Vision**

To become a professionally run and fully integrated oil and gas services, supply chain initiatives, maintenance, logistics and procurement services with global presence in at least two other countries in Africa

### **Mission**

To leverage on technology in providing globally competitive services whilst working through a professional and competent team in order to deliver excellent services efficiently every time.

### **Core values**

Professionalism

Integrity

Deligence

## COMMUNITY AFFAIRS, SAFETY, HEALTH, ENVIRONMENT & SECURITY (CASHES) POLICY

It is the policy of **ML GLOBAL SERVICES LIMITED** to carry out its business activities in such a manner that no fatality or injuries or damage to property arises. Every necessary step shall be taken to safeguard and protect all that work for us including third parties and host communities.

Positive attitude to safety shall be rewarded as incentives. Detailed work safe procedures are in place and quality site management visit must be implemented.

In order to ensure an available performance, the following strategies will be adopted:

- ◆ The continuous identification of accident causes
- ◆ The control of accidents causes
- ◆ The minimisation of accident causes

**ML GLOBAL SERVICES LIMITED** will ensure relevant HSE training is in place for all its employees. Work may affect any or every system of the human body. It is therefore essential that early recognition of health hazards is established, monitored and controlled. The company retains the services of good clinics to take care of the workers. Staff and other personnel are encourage to make use of these facilities. The company places great emphasis on the promotion of the total health concepts and the protection of workers.

**ML GLOBAL SERVICES LIMITED** is committed to ensure clean and healthy environment especially in the course of work. We take environmental sanitation program seriously. Every efforts will be concentrated towards minimization of dust and disposal of chemical injuries to health. It is expected of every employee to provide health and environmental acceptable condition both at home and work.

## COMPANY INFORMATION

### ML-GLOBAL SERVICES LIMITED

Registration No: 1718297  
Incorporation Date: 05/10/2020  
Address: 7g, Grace Anjous Street, Off Adebayo Doherty  
Lekki Phase 1, Lagos  
Tel: +234 806 698 8623 +234 811 946 1357  
Website: [www.ml-globalservices.com](http://www.ml-globalservices.com)  
Email Address: [info@ml-globalservices.com](mailto:info@ml-globalservices.com)  
[oluwaseyi@ml-globalservices.com](mailto:oluwaseyi@ml-globalservices.com)

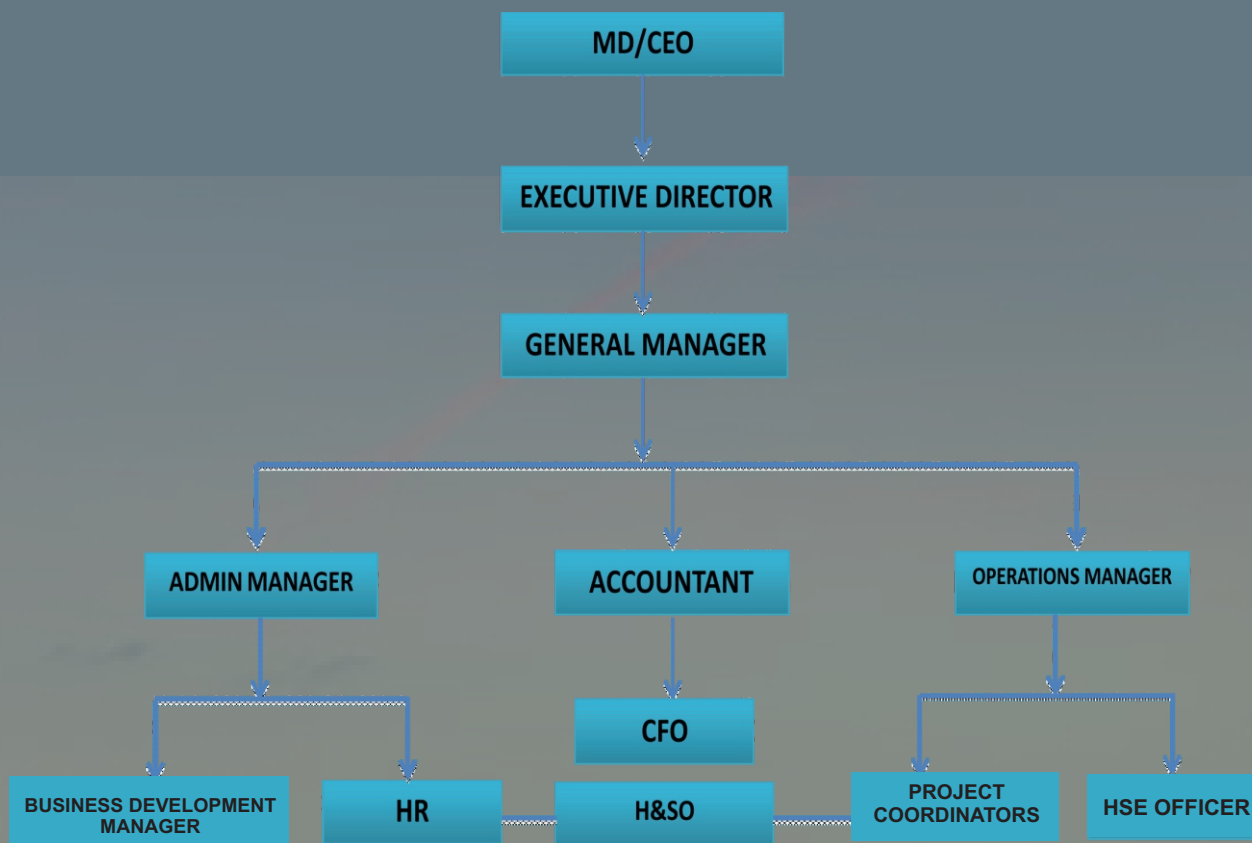
### PRINCIPAL ACTIVITIES

Energy Services, Marketing Consultancy and Product Development

### MANAGING DIRECTOR

Engr. Oluwaseyi Aborisade

## OUR ORGANIZATIONAL STRUCTURE



### Our Management Team

The business is driven by our 3 working directors, collectively they accumulate more than 40 years of work experience in the oil and gas industry. They are involved in the business development, project management, procurement, delivery and administration of the company.

The management team proactively gathers feedback, identifies changes in business environment, review work processes and communicates key learning points and company policy to all staff at regular meetings.

### Our People

Our people are crucial in the delivery of our service and solution to our clients. In order to ensure that everyone is equipped with the right skill, knowledge and attitude, a comprehensive training programme is put in place to constantly upgrade our people in technical and management skills.

We believe firmly in providing the right training, accredited certification and practical knowledge for our people, in order for them to execute their duties and responsibilities confidently. Our aim is to stay relevant to the ever-changing market place and client's requirement.

## CSR (CORPORATE SOCIAL RESPONSIBILITY)

**ML GLOBAL SERVICES LIMITED** is also involved in charity works all over the country particularly in the girl child and the internally displaced children.

We intend to partner with the government, foreign bodies and NGOs to build schools and technical centers across Nigeria. We are already distributing exercise books, food items, clothing and medical care for the less privileged.





## QUALITY MANAGEMENT POLICY

**ML GLOBAL SERVICES LIMITED** shall continually lead the way as role model in quality service deliveries on energy services, marketing consultancy, product development etc in doing so, we shall continually demonstrate transparency and customer focus approach, while introducing innovation in service delivery processes, to the benefit of all stakeholders and in line with international best practices.

### LOCAL CONTENT

**ML GLOBAL SERVICES LIMITED** maintains a local/Nigerian Content Policy aimed at encouraging the transfer of knowledge/technology and local content development that relies as much as possible on the local (indigenous) manpower, with a view to ensuring that more Nigerians can aspire to senior managerial and technical positions.

- ◆ Executing all projects in-country with indigenous technicians
- ◆ Identifying and implementing technology transfer/training for Nigerian personnel at the facilities of accredited private and government bodies in line with regulations in our industry for fresher or indebt technical training, deploying state of the art technology and models for efficient service delivery.
- ◆ Collaborating with clients, government, partners and other indigenous organizations to promote local contents.
- ◆ Training of Nigerian employees and local content development, protecting the environment and respect for human and social rights of employees and contribution to local economic development, working closely with local communities to successfully deliver projects, providing community related projects and youth development in the local communities where we work.

Our local content policy is engineered towards growing the local economy and local capacity development, including empowerment of our own employees. The implementation of these policies is the responsibility of all ML-Global Service Limited employees including the senior management.

## PRODUCT AND SERVICES

ML Global Services Limited is designed to provide numerous services of the highest standard through innovative, creative and imaginative services by technically skilled and motivated staff.

### OIL AND GAS SERVICES

We specialize in exploration and production support services and the main range of our activities are Subsea Services (Subsea Construction and Maintenance Services), Project Management Services (PMS), Drilling/Production Chemicals and Materials Supply, Equipment and Material Supply Services, Installation and Maintenance Services for Firefighting Equipment, Products, Fire and Gas detection/Protection System, Installation/Upgrade of Onshore Production Facilities and Platforms, Offshore/Onshore Pipeline Laying and Construction.

### SUPPLY CHAIN INITIATIVES

With our wealth and technical know-how, we analyse data to identify and solve your logistics and supply chain needs to avoid hitches and to ensure that our clients meet full compliance standard and have the required documentation to avoid delays that can cause penalties.

We continually strive to increase our quality and services delivery to our clients and we are currently working with professionals and experts who understand the following:

- ◆ Quality Control
- ◆ Maximizing Services
- ◆ HSE Compliance and Regulations
- ◆ Customer Services
- ◆ Procurement

### MARKET CONSULTANCY

We are passionate about bringing values for our clients who yearn for exceptional creativity and results that justify their marketing investments. We market products, services, equipment and brands by creating and implementing extraordinary experiences and campaigns designed and produce to inspire, educate, inform, transform and convert targeted audiences across relevant touch points.

### PROCUREMENT SERVICES

Another important aspect of our services line is the procurement and supply of materials, chemicals tools, spares, safety wares, equipment, etc to the energy, power, and manufacturing sectors of the Nigerian economy. Be it locally or internationally, we source our products from reputable manufacturers or their appointed representatives. This has sustained our growing tradition of servicing every purchase order with very high quality and standard products, to the utmost satisfaction of our highly valued clients.

## PRODUCT AND SERVICES

### CONSTRUCTION ENGINEERING

We specialize in Infrastructure projects, such as bridges, buildings, road, railways, and gas plant, progress through feasibility, design, construction, commissioning and handover phases.

ML Global Services Limited Construction engineering is about organising and coordinating the people, equipment and materials so that the construction work is done efficiently , safely and in an environmentally sensitive and sustainable way.

### INSTALLATION AND MAINTENANCE

ML Global Services Limited combines experience with the economy advantages of locally sourced labour, into an industry-leading commissioning, operations and maintenance offering that delivers compelling advantages to our clients.

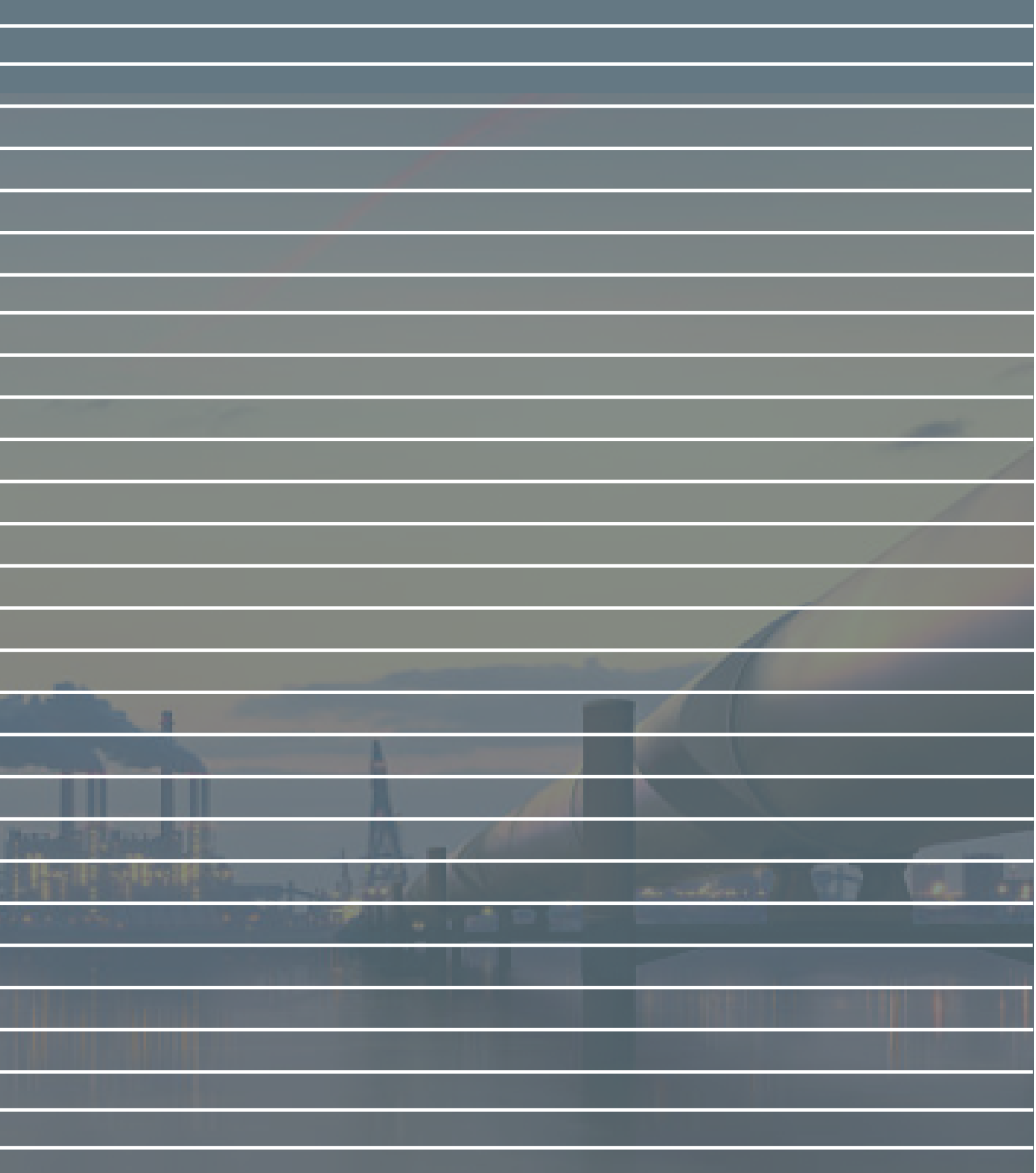
Our approach delivers ML Global Service Limited top intellectual capital right to our clients project site no matter how remote.

We go beyond merely running our clients project operation, we continually analyse its functioning with a view to optimizing energy efficiency and use of latest technology.

Our Clients:



**NOTE:**



# **ML Global Services Limited**

# **Company Profile**



**ENERGY SERVICES, MARKETING CONSULTANCY AND PRODUCT DEVELOPMENT**



**ML**

Global Services Limited



90987660001232223